

CERTIFIED LAND CORNER RECORDATION

DESCRIPTION OF CORNER EVIDENCE FOUND, AND ORIGINAL RECORD (if known)

LOCATION
 27 26
 34 35
 T.14N., R.63W.
 6th P.M.

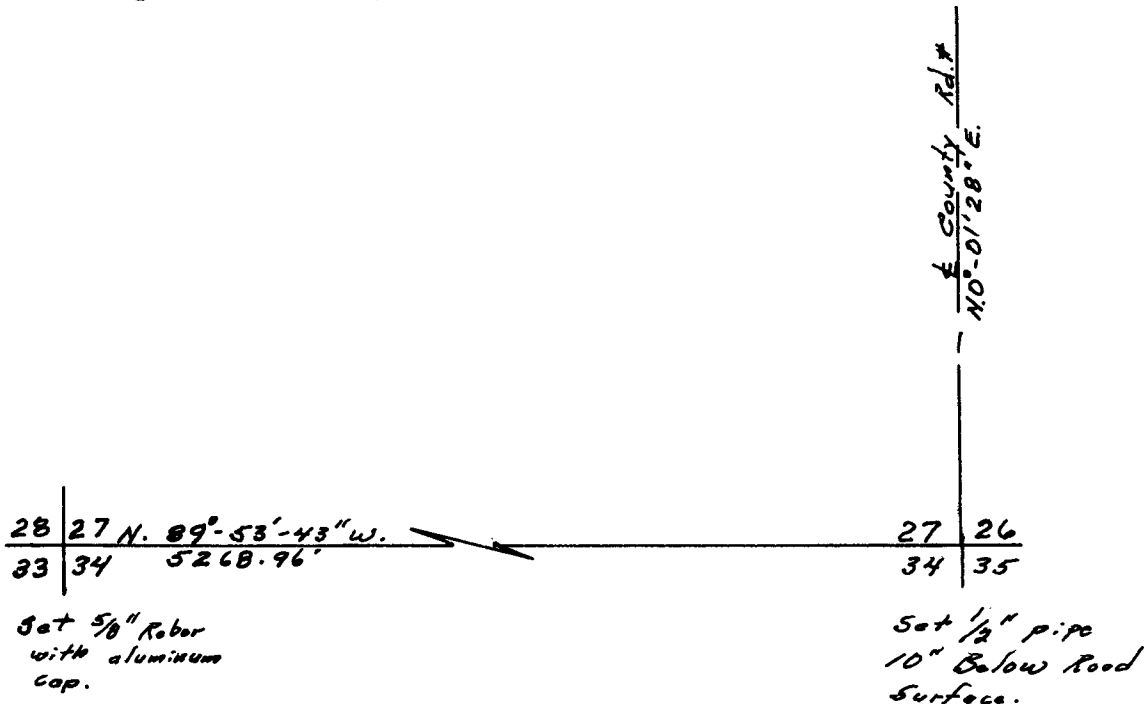
No evidence of original corner found.
 Re-established corner by double proportionate method.
 G.L.O. record - granite stone 20" x 10" x 6".

DESCRIPTION OF MONUMENT AND ACCESSORIES ESTABLISHED
 TO PERPETUATE THE ORIGINAL LOCATION OF THIS CORNER:

At the corner: Set 1/2" pipe 10" below road surface.
 Accessories: Set 1/2" pipe 40.0 ft., N.89° 53' 43" W. from section corner.

SKETCH, WITH COURSE AND DISTANCE TO ADJACENT CORNER IF DETERMINED IN THIS SURVEY.
 (May Sketch or Paste Reproduction on Reverse Side.)

Note: Bearings determined by solar observation.



I, Robert C. Corbet certify that I have carefully performed or reviewed the work done on the diagrammed corner as reported on this recordation form and approve the same.

Robert C. Corbet
 Signature of Surveyor

L.S. No. 495
 Registration No.

STATE OF WYOMING,
 Office of Clerk and Recorder,
 County of Tanmie

This "corner record" was filed for record on the 9 day of August, 1973, was noted on the cross-index plat and is assigned page No. _____, in book No. _____.

John B. Huiman
 County Official

Cross Index No. V17 T. 14 R. 63 6 Mer.
 _____ T. _____ R. _____ Mer.
 _____ T. _____ R. _____ Mer.
 _____ T. _____ R. _____ Mer.
 _____ T. _____ R. _____ Mer.
 _____ T. _____ R. _____ Mer.
 _____ T. _____ R. _____ Mer.

Photographed

Indexed *FB*

Posted

Assessor

The State of Wyoming }
 County of Laramie } SS

This instrument was filed for record
 at 11/14 o'clock P. M. on the
9 day of August
 A. D. 19 73 and duly recorded in
 Book of 1973

John A. McArthur
 County Clerk & Ex-Officio Register of Deeds,
 Deputy